

## COMING SOON



## USE OF PRODUCT

The 3" Prime Downlight is a small aperture fixture with a shallow housing height of 4 1/4", which is ideal for residential and commercial applications. Available options include die-cast trims, various temperatures, optics, and dimmable drivers.

## LED ENGINE

LED engine available with CREE LEDs in 2700K, 3000K, 3500K, or 4000K in standard 90+ CRI. 2-step MacAdam ellipse allows for color consistency between fixtures. The LED is mounted to an aluminum heat sink for maximum life output and thermal management. LED engine is accessible from below the ceiling.

## FRAME CONSTRUCTION

Non-IC and IC-rated housing are constructed from a 16-gauge heavy-duty, powder-coated cold-rolled steel frame and includes a junction box with 1/2" knockouts. Butterfly brackets (included) accommodate universal, c-channel, or flat bar hangers (order separately).

## ADJUSTMENT

- Housing supports 359° locking rotation.
- Aperture collar adjusts 15°± horizontally within frame for square ceiling alignment.
- Collar notch allows for easy alignment for square applications.
- Aperture collar compatible up to 1 1/2" ceiling thickness. Consult factory for made-to-order aperture collars exceeding 1 1/2".

## OPTICAL LENS

Field replaceable optical lenses are available in 12°, 22°, 27°, 35°, and 45°. Easily achieve narrow spot to wide flood beam pattern.

## DIMMING

Available in six driver selections. (ID) Standard all-inclusive ELV (120V), Triac (120V), and 0–10V (120–277V) dimming driver called Intelligent Drive, 120–277V. (LDE1) Lutron Hi-Lume 1% Ecosystem with soft-on, fade-to-black dimming, 120–277V. (L3DA) Hi-lume 1% EcoSystem/3-Wire L3D Driver (EEI) eldoLED Eco 1% Dim (0–10V), 120–277V. (EDIO) eldoLED Solo 0.1% Dim (0–10V), 120–277V. (EDID) eldoLED Solo 0.1% Dim (DALI), 120–277V. Driver accessible from below ceiling.

## THERMAL MANAGEMENT

Fixture location ambient temperature should not exceed -20° to 40°C.

## TRIM

Flange trims are die-cast and compatible with all ceiling materials. Consult factory for made-to-order finishes.

## EMERGENCY BATTERY

Optional emergency battery available for a minimum of 90 minutes with remote test switch in 800 delivered lumens.

## LABELS/COMPLIANCE/WARRANTY

- CSA listed for US and Canada.
- Energy Star certified product.
- Dry/Damp/Wet location rated.
- State of California Title 24 and JA8 compliant.
- 5-year limited warranty.



## ORDERING INFORMATION

Series	Aperture Size	Lumens	Color Temperature	Voltage	Dimming	Optical Lens	Filter
RPA - Prime Series	3 - 3"	6L - 625 lm 10L - 1035 lm 13L - 1300 lm 16L - 1600 lm	27 - 2700K 30 - 3000K 35 - 3500K 40 - 4000K	UNV - 120–277 120 - 120V 347 - 347V	ID <sup>1</sup> - Standard All-Inclusive ELV, Triac, and 0–10V Dimming Driver (Intelligent Drive) LDE1 <sup>2</sup> - Lutron Hi-Lume 1% Ecosystem with Soft-on, Fade-to-Black Dimming L3DA - Hi-lume 1% EcoSystem/3-Wire L3D Driver EEI <sup>2</sup> - eldoLED Eco 1% Dim (0–10V) EDIO <sup>2,3</sup> - eldoLED Solo 0.1% Dim (0–10V) EDID <sup>2,3</sup> - eldoLED Solo 0.1% Dim (DALI)	12 - 12° 22 - 22° 27 - 27° 35 - 35° 45 - 45°	None - Leave Blank F - Frosted Filter H - Honey Comb S - Solite Filter L - Linear Filter

Housing Type	Aperture	Frame Accessories	Collar	Options
IC - IC Air-Tight New Construction NC - Non-IC New Construction	SFD - Square Flange Downlight	UH <sup>4</sup> - Universal Bar Hanger C - C-Channel Bar Hanger B - Flat Bar Hanger	Blank - 1.0" Depth 15 - 1.5" Depth 20 - 2.0" Depth 30 - 3.0" Depth MTO - Made To Order	ER8 <sup>2</sup> - Emergency Battery with Remote Switch (800 lm) CP <sup>4</sup> - Chicago Plenum

## TRIM ORDERING INFORMATION

Aperture Size / Shape / Trim Type / Style	Bevel
3SFP - 3" Square Flange Pinhole	W - White B - Black H - Haze BZ - Bronze C - Clear MTO - Made To Order

## Notes

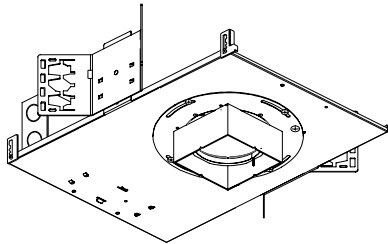
1. Intelligent Drive is the standard driver.
2. Ceiling access required.
3. Must specify logarithmic or linear eldoLED driver.
4. Only compatible with IC housing.

## LUMEN CHART

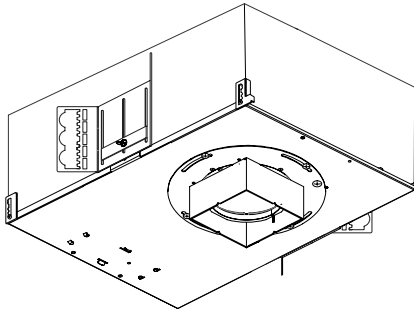
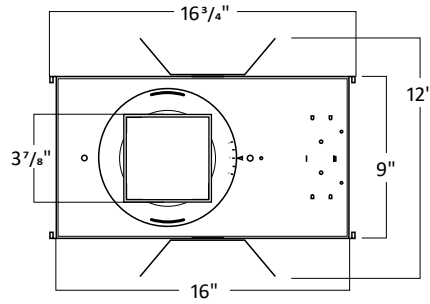
WATTS	LUMENS	VOLTAGE	CRI
10W	625 lm	120–277V	90+
14W	1035 lm	120–277V	90+
20W	1300 lm	120–277V	90+
30W	1600 lm	120–277V	90+

Ordering information and IES File name reflect delivered lumens based on 3000K with 30° optical lens. Lumens will vary based on CCT, optical lens, and bevel finish.

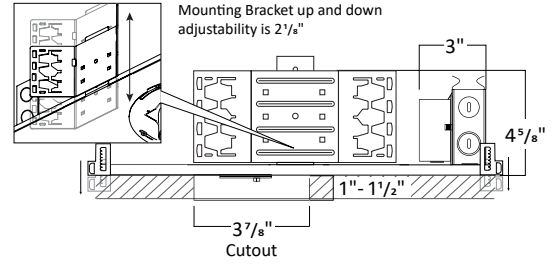
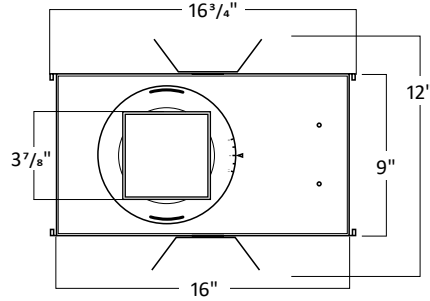
### HOUSING DIMENSIONS



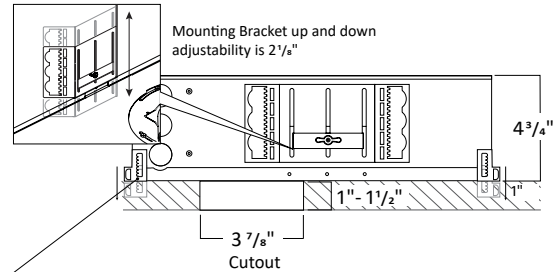
**NC - Non-IC New Construction**



**IC - Air-Tight New Construction**



1. Must remove spacer to achieve 1 1/2"
2. Consult factory for Made to Order collar height
3. Allow 1/4" tolerance



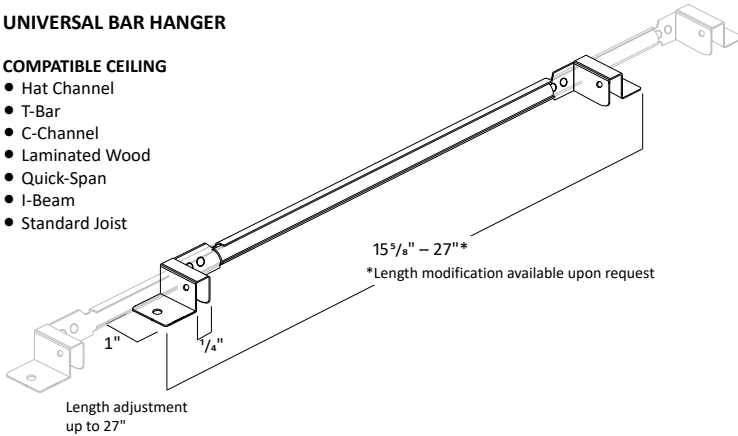
Ceiling mount bracket  
(Compatible with Universal Bar Hanger)

### FRAME ACCESSORIES

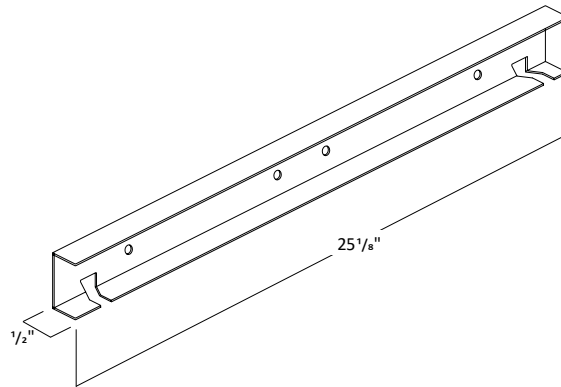
#### UNIVERSAL BAR HANGER

##### COMPATIBLE CEILING

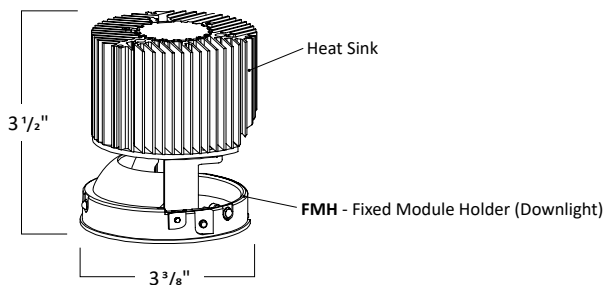
- Hat Channel
- T-Bar
- C-Channel
- Laminated Wood
- Quick-Span
- I-Beam
- Standard Joist



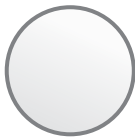
#### C-CHANNEL BAR HANGER



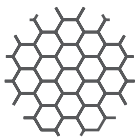
### MODULE DIMENSIONS



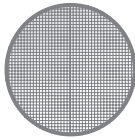
FILTERS



Frosted Filter



Honey Comb



Solite Filter



Linear Filter

TRIM DIMENSIONS



Pinhole Opening

