



GENERAL INFORMATION

USE OF PRODUCT

PRIME Cylinder Series may be used in hospitality, commercial, retail, and residential applications. This product will reduce energy consumption, emits little heat, and reduces cooling loads for added costs savings. Approximately 75% in energy savings compared to incandescent light source. This product is for indoor use only.

LED ENGINE

LED engine available with CREE LEDs in 2700K, 3000K, 3500K, or 4000K in standard 93+ CRI. 2 Step MacAdam ellipse allows for color consistency between fixtures. LED mounted to aluminum heat sink for maximum life output and thermal management.

HOUSING

Rugged aluminum housing.

LED DRIVER

Durable dimmable driver provides high power factor with optimum thermal management to prevent damage caused by high temperature.

OPTICS

Field replaceable optical lens available in 12°, 30°, 35°, 40°, and 50°. Easily achieve narrow spot to wide flood beam pattern. Option for frosted, honeycomb, solite or linear filter.

MOUNTING

The PRIME cylinder bi-directional series may be cable hung or wall mounted.

DIMMING

Available in nine driver selections. (ID) Standard all-inclusive ELV (120V), Triac (120V), and 0–10V (120–277V) dimming driver called Intelligent Drive.

LABELS / COMPLIANCE

- CSA Listed for US and Canada
- Damp rated
- 5 year limited warranty.

GENERAL PERFORMANCE CHART

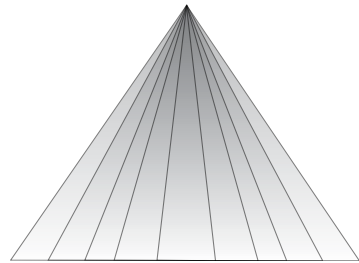
*Detailed performance chart may be found on page 3



	6W	9W	12W	15W	20W
Initial Lumens	657/955	890/1296	1122/1618	1267/2015	1485/2422
Delivered Lumens	599-784	809-1074	969-1360	1094-1685	1284-2070

* Values are listed at 3000K, 90+ CRI with a white bevel & trim.
Delivered lumens range based on beam spread.
Performance may vary +/- 5%

BEAM SPREAD



Available optics: 12° 30° 35° 40° 50°

- Field replaceable TIR optics
- Easily achieve narrow spot to wide flood beam pattern
- Optional filters available upon request

PRIME FAMILY OF PRODUCTS



Downlight



TechZone®



WoodWorks®



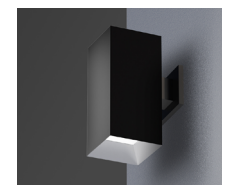
Multiple Dedicated Bevel



Multiple Open Bevel



Cylinder



Square Luminaire

ORDERING INFORMATION

Series	Diameter	Shape	Length	Direction	Up-Light Wattage ¹	Up-Light Color Temperature	Up-Light Optical Lens	Up-Light Filter
RPA	4 - 4"	CY - Cylinder	10 - 10"	BD - Bi-Directional	6W - 6 Watt 9W - 9 Watt 12W - 12 Watt 15W - 15 Watt 20W - 20 Watt	27K - 2700K 30K - 3000K 35K - 3500K 40K - 4000K	12 ³ - 12° 30 - 30° 35 - 35° 40 - 40° 50 - 50°	Blank - None F - Frosted Filter H - Honey Comb S - Solite Filter L - Linear Filter

Down-Light Wattage ¹	Down-Light Color Temperature	Down-Light Optical Lens	Down-Light Filter	Dimming
6W - 6 Watt 9W - 9 Watt 12W - 12 Watt 15W - 15 Watt 20W - 20 Watt	27K - 2700K 30K - 3000K 35K - 3500K 40K - 4000K	12 ³ - 12° 30 - 30° 35 - 35° 40 - 40° 50 - 50°	Blank - None F - Frosted Filter H - Honey Comb S - Solite Filter L - Linear Filter	ID ² - Standard All-Inclusive ELV, Triac, and 0-10V Dimming Driver (Intelligent Drive)

Bevel Finish	Cylinder Finish	Mounting	Option	Notes
W - White B - Black H - Haze S - Specular Clear WE - Wheat MTO - Made to order	BL - Black WH - White SL - Silver MTO - Made to order	TC - Triple Cable WM - Wall Mount	ER8W - Emergency Battery with Remote test switch (800 lm)	<ol style="list-style-type: none"> Total system wattage may not exceed 24W Intelligent Drive is the standard driver 12° spread without lens on trim.

TOTAL SYSTEM WATTAGE MAY NOT EXCEED 24W

PERFORMANCE CHART

Optics		¹ 12°	30°	35°	40°	50°
6W	Initial Lumens	657	955	955	955	955
	Delivered Lumens	599	730	784	774	745
	UGR		16.6	14.9	18	19.3
9W	Initial Lumens	890	1296	1296	1296	1296
	Delivered Lumens	809	995	1074	1065	1014
	UGR		17.7	16	19.2	20.3
12W	Initial Lumens	1122	1618	1618	1618	1618
	Delivered Lumens	969	1249	1360	1353	1272
	UGR		18.5	16.9	20.2	21.8
15W	Initial Lumens	1267	2015	2015	2015	2015
	Delivered Lumens	1094	1533	1685	1614	1580
	UGR		18.8	17.5	20.9	22.8
20W	Initial Lumens	1485	2422	2422	2422	2422
	Delivered Lumens	1284	1858	2070	1956	1916
	UGR		19.4	18.3	21.6	23.5

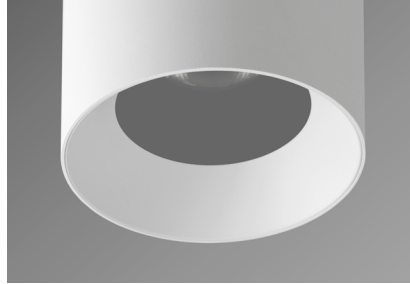
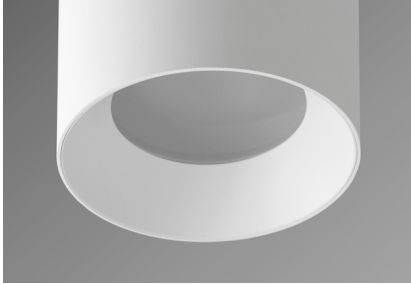
* Values are listed at 3000K, 90+ CRI with a white bevel & trim.

Notes

- 12° spread without lens on trim

DIFFUSED LENS

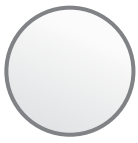
OPTIONAL FIELD REMOVABLE LENS



- Listed IES files are with diffused lens

- Not suitable for wet locations
- Increase in lumens by approximately 7%

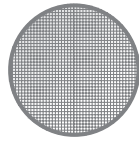
FILTERS



Frosted Filter



Honey Comb



Solite Filter



Linear Filter

RPA4-CY-10 DIMENSIONS

TRIM DIMENSIONS

