

## PRIME 4" LED ARCHITECTURAL ROUND FLANGED DOWNLIGHT FOR 6" TECHZONE® CEILINGS (SILHOUETTE®, SUPRAFINE®, INTERLUDE®, OR PRELUDE®) BY ARMSTRONG®



### USE OF PRODUCT

The 4" PRIME Architectural Series for use in 6" TechZone Ceilings allows for a seamless installation and integration of luminaires within either the Silhouette®, Suprafine®, Interlude®, or Prelude® ceiling types offered by Armstrong®. Available in Downlight, Wall Wash, and Adjustable in an assortment of finishes in round or square flanged trims.

### LED ENGINE

LED engine available with CREE LEDs in 2700K, 3000K, 3500K, or 4000K in standard 93+ CRI. 2 Step MacAdam ellipse allows for color consistency between fixtures. LED mounted to aluminum heat sink for maximum life output and thermal management. LED engine is accessible from below ceiling.

### FRAME CONSTRUCTION

NonIC housing constructed from 20 gauge cold rolled steel. Junction box with ½" knockouts. Integrated mounting brackets that will snap directly into 6" Techzone® Ceiling grids. Compatible with the following series: Silhouette®, Suprafine®, Interlude®, or Prelude®

### OPTICAL LENS & FILTERS (Field Replaceable)

Field replaceable optical lens available in 18°, 30°, 50° and 80°. Easily achieve narrow spot to wide flood beam pattern. Accepts up to 2 filters.

### DIMMING

Available in 7 driver selections. (ID) Standard all-inclusive ELV(120V), Triac(120V), and 0-10V(120-277V) dimming driver called Intelligent Drive, 120-277V. (PEQ0) Lutron Hi-Lume Premier Ecosystem 0.1% w/soft on, fade to black dimming, 120-277V. (LDE1) Lutron Hi-Lume 1% Ecosystem with soft on, fade to black dimming, 120-277V. (L3DA) Hi-Lume 1% EcoSystem/3-Wire L3D Driver (EEI) eldoLED Eco 1% Dim (0-10V), 120-277V. (EDIO) eldoLED Solo 0.1% Dim(0-10V), 120-277V. (EDID) eldoLED Solo 0.1% Dim(DALI), 120-277V. Driver accessible from below ceiling.

### THERMAL MANAGEMENT

Ambient temperatures at fixture location should not exceed -20° to 40°C.

### TRIM

Die cast trim. Consult factory for made to order finishes.

### EMERGENCY BATTERY

Optional emergency battery available for a minimum of 90 minutes with Remote test switch in 800 delivered lumens.

### LABELS/COMPLIANCE/WARRANTY

- CSA listed for US and Canada
- Dry/Damp/Wet location rated
- Energy Star
- 5 year limited warranty



## ORDERING INFORMATION

### RPA

Series	Aperture Size	Lumens	Color Temperature	Voltage	Dimming	Optical Lens	Filter
PRIME Series	4 - 4"	10L - 1055 lm	27 - 2700K	UNV - 120-277	ID <sup>1</sup> - Standard all-inclusive ELV, Triac, and 0-10V dimming driver (Intelligent Drive)	18 - 18°	None - Leave blank
		12L - 1250 lm	30 - 3000K	120 - 20V	PEQ0 - Lutron Hi-Lume Premier Ecosystem 0.1% w/ soft on, fade to black dimming	30 - 30°	F - Frosted filter
		16L - 1645 lm	35 - 3500K	347 - 347V	LDE1 <sup>2</sup> - Lutron Hi-Lume 1% Ecosystem with soft on, fade to black dimming	50 - 50°	H - Honey comb
		21L - 2170 lm	40 - 4000K		L3DA - Hi-lume 1% EcoSystem/3-Wire L3D Driver	80 - 80°	S - Solite filter
		24L - 2495 lm			EEI <sup>2</sup> - eldoLED Eco 1% Dim (0-10V)		L - Linear filter
		31L - 3105 lm			EDIO <sup>2,3</sup> - eldoLED Solo 0.1% Dim (0-10V)		
		34L - 3475 lm			EDID <sup>2,3</sup> - eldoLED Solo 0.1% Dim (DALI)		
		40L - 4030 lm					

Housing Type	Aperture	Options
TZ6 - 6" TechZone Ceiling	RFD - Round Flange Downlight	ER8 <sup>2</sup> - Emergency battery with remote switch (800 Lumens) LAW - Lutron Athena Wireless Node (RF only version)

## TRIM ORDERING INFORMATION

Aperture Size / Shape / Trim Type / Style	Bevel / Flange Finish
4RFO - 4" Round Flange Open	<b>W-W</b> - White bevel / white flange <b>H-W</b> - Haze bevel / white flange <b>B-B</b> - Black bevel / black flange <b>H-H</b> - Haze bevel / Haze flange <b>S-S</b> - Specular clear bevel / Specular clear flange <b>S-W</b> - Specular clear bevel / white flange <b>WE-WE</b> - Wheat bevel / wheat flange <b>MTO</b> - Made to order

- Notes
1. Intelligent Drive is the standard driver.
  2. Ceiling access required.
  3. Must specify logarithmic or inear eldoLED driver.

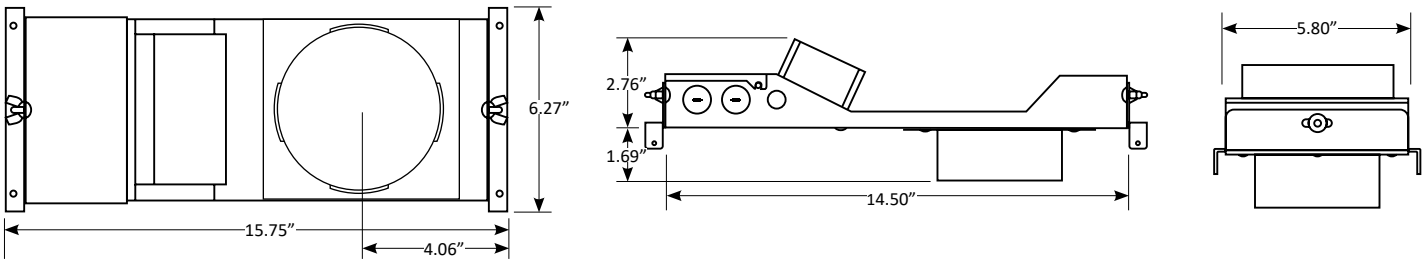
PRIME 4" LED ARCHITECTURAL ROUND FLANGED DOWNLIGHT FOR 6" TECHZONE® CEILINGS  
(SILHOUETTE®, SUPRAFINE®, INTERLUDE®, OR PRELUDE®) BY ARMSTRONG®

## LUMEN CHART

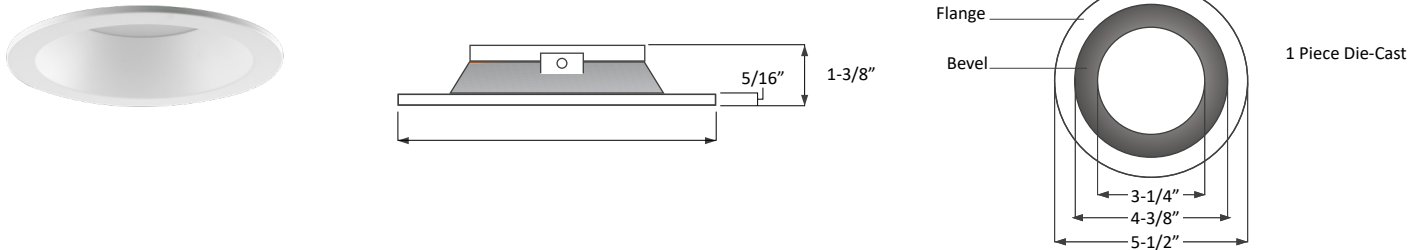
Wattage	Delivered Lumens	Voltage	CRI
11W	1055 lm	120 - 277V	93+
16W	1250 lm	120 - 277V	93+
20W	1645 lm	120 - 277V	93+
30W	2170 lm	120 - 277V	93+
31W	2495 lm	120 - 277V	93+
38W	3105 lm	120 - 277V	93+
45W	3473 lm	120 - 277V	93+
58W	4030 lm	120 - 277V	93+

\*Above chart, ordering information, and IES File name reflect delivered lumens based 3000K and 30° optical lens.  
\*\*Lumens will vary based on CCT, optical lens, and bevel finish.

## HOUSING DIMENSION



## TRIM DIMENSION



## MODULE/HEATSINK, LED HOLDER & FILTER DIMENSION

